

Sonicwall NAT Ayarları

Sonicwall UTM cihazına baęlı saę üst bölümdeki Wizard yazısına tıklayalım.

SONICWALL | Network Security Appliance

Dashboard / Multi-Core Monitor

Select a guide: Public Server Guide

Welcome

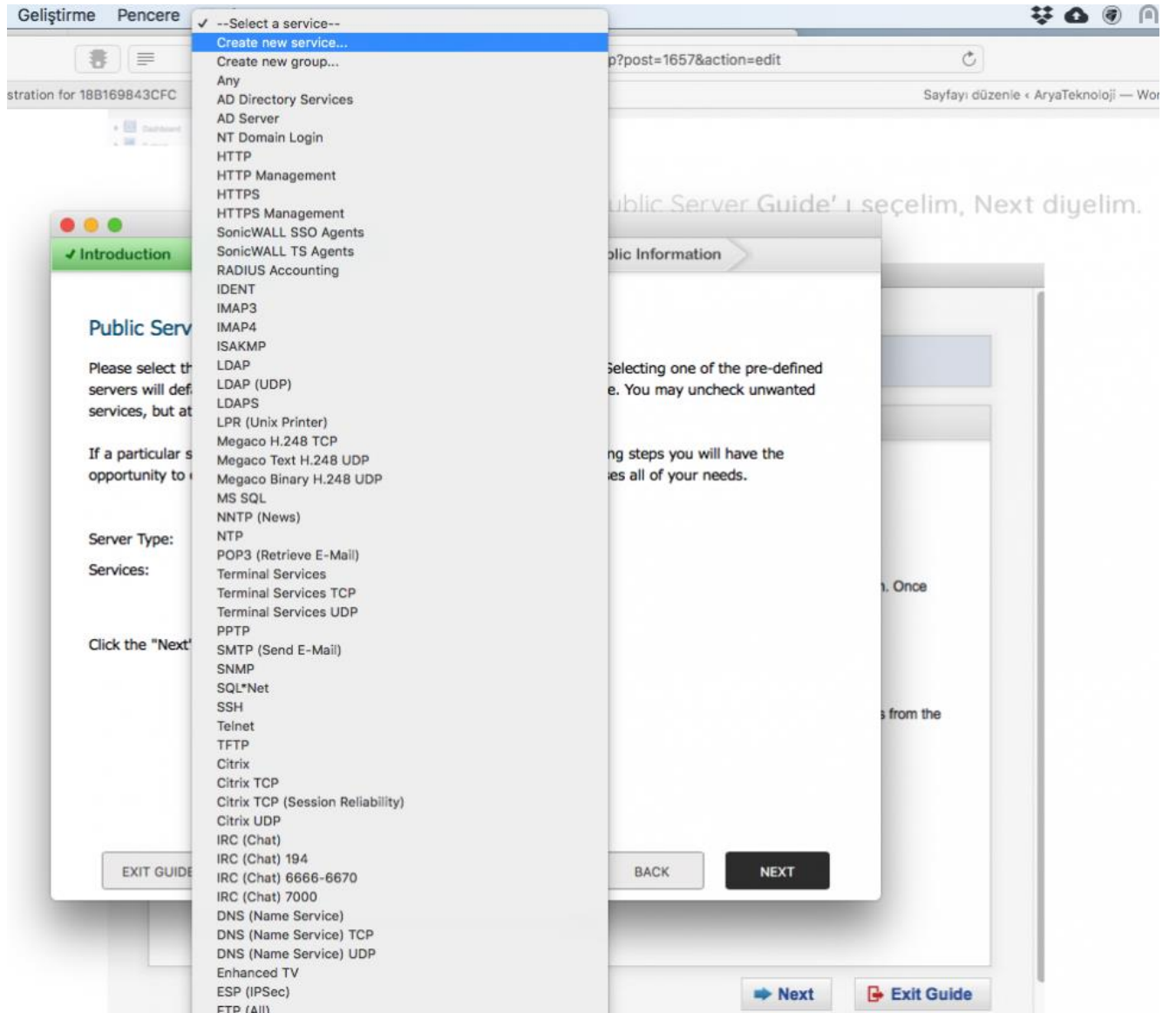
Welcome to the Configuration Guide
Select one of the wizards below to easily configure your SonicWall:

- Setup Guide** - This wizard will help you quickly configure the SonicWall to secure your Internet connection. Once completed, you can use the SonicWall Web Management Interface for additional configuration.
- PortShield Interface Guide** - Select the initial ports assignment in integrated managed LAN switch of the SonicWall.
- Public Server Guide** - Quickly configure your SonicWall to provide public access to an internal server.
- VPN Guide** - Create a new site-to-site VPN Policy or configure the WAN GroupVPN to accept connections from the Global VPN Client.
- App Rule Guide** - Configure the security features for App Rule
- WXA Setup Guide** - Configure the coupled WXA series appliance for WAN Acceleration

Click the "Next" button to proceed.

[Next](#) [Exit Guide](#)

Service Type alanındaki ön tanımlı servislerde istediğimiz port yoksa other'ı seçelim Services den istediğimiz servis varsa seçelim (bir çok protokol burada anımlı olarak gelmektedir) yoksa "Create new service" i seçelim.



Servis kısmında tanımlanmak istenilen port açılmalıdır ya da var olan default portlardan seçilebilir.

192.168.1.200/addServiceObjDlg.html

SONICWALL™ Network Security Appliance

Name:

Protocol:

Port Range: -

Sub Type:

Ready

Port yönlendireceğimiz serverin ismini, ip adresini ve server ile ilgili opsiyonel olarak açıklayı girelim ve Next diyelim.

192.168.1.200/psWizardPrivateConfig.html

✓ Introduction > ✓ Server Type > Private Network > Public Information

Server Private Network Configuration

Please enter a name to identify this server, and the server's private (internal) IP address. A Network object representing the private server will be created, as needed, using the name and IP address information you provide, and will be assigned to the appropriate Zone.

You may enter an optional comment to help further identify the server.

If you do not know this information, please contact the server's administrator or your network administrator before continuing.

Server Name:

Server Private IP Address:

Server Comment:

Click the "Next" button to proceed.

EXIT GUIDE BACK NEXT

Bu sunucuya talebin hangi WAN ip adresinden geleceğini seçilir ve Next tıklanır.

Bu örnekte UTM in wan bacağı ile internet arasında bir router olduğu için Lokal ip adresi gözükmemektedir.

192.168.1.200/main.cgi

✓ Introduction > ✓ Server Type > ✓ Private Network > Public Information

Server Public Information

Please specify the server's public (external) IP address. The default value is that of your SonicWall's WAN interface, and should only be changed if this server will be accessed over the Internet by a different address.

Specifying a different address will result in the creation of public server Network Object that will be bound to the WAN Zone.

If you are uncertain of this address, you are encouraged to leave it at the default.

Server Public IP Address:

Click the "Next" button to proceed.

EXIT GUIDE BACK NEXT

Yaptığımız ayarları kontrol edebileceğimiz bir ekran geldi. Onaylarsak NAT kuralı devreye girecek. Burada bir güvenlik açığımız var. Wandan gelen any ip lokale erişebilecek. Bunuda istersek ve imkanımız varsa Network -> Services altından değiştirebiliriz.

Public Server Configuration Summary

Please review the settings below and click "Apply" to create the new objects listed below.

Server Address Objects

1. Create 'falancaserver Private' assigned to LAN Zone for Host 192.168.28.2.
2. Reuse 'X1 IP' address object assigned to WAN Zone for 192.168.10.2.

Server Service Group Object

1. Create 'falancaserver Services' with falancaport Service.

Server NAT Policies

1. Create Inbound Server NAT Policy to rewrite packets to original destination 'X1 IP' to translated destination 'falancaserver Private'.
2. Create Outbound Server NAT Policy to rewrite packets from 'falancaserver Private' to translated source 'X1 IP'.
3. Create Loopback NAT Policy to allow access from all internal zones to the server at public IP address 192.168.10.2.

Server Access Rules

1. **WAN > LAN** - Allow 'Any' to 'X1 IP' for Service Group 'falancaserver Services'.
Similar rules will be created from all lower security zones to the LAN zone.

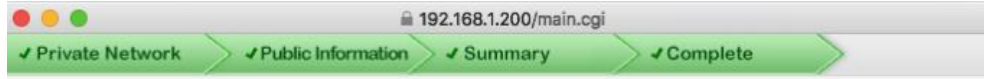
To apply these settings, click "Apply".

EXIT GUIDE

BACK

APPLY

Aşağıdaki ekranı gördüğümüzde NAT kuralını başarı ile oluşturmuş oluyoruz.



Public Server Guide Complete

Congratulations! You have successfully completed the SonicWall Public Server Guide.

Additional and advanced configuration options can be found in the SonicWall Web Management Interface.

You should now be able to access your server from the WAN port at 192.168.10.2.

To close this window, click "Close".

CLOSE

Network -> NAT Policies sekmesini tıkladığınızda , firewall üzerinde koşan tüm NAT kurallarını görebiliriz. Sonicwall loopback kuralında bizim için yazarak işimizi kolaylaştırdır.

SONICWALL Network Security Appliance Wizards | Help | Logout

Mode: Configuration

Dashboard System Network

Interfaces PortShield Groups Failover & LB Zones DNS DNS Proxy Address Objects Services Routing NAT Policies ARP Neighbor Discovery MAC-IP Anti-spoof DHCP Server IP Helper Web Proxy Dynamic DNS Network Monitor 3G/4G/Modem Access Points Firewall Firewall Settings DPI-SSL DPI-SSH

21 Add Delete Search... IPv4 & IPv6 View All Types

#	Source Original	Source Translated	Destination Original	Destination Translated	Service Original	Service Translated	Interface Inbound	Interface Outbound	Priority	Class	Comment	Enabled	Configure
1	Any	Original	X3 IP	Original	Ping	Original	X3	X3	1	Default		✓	
2	Any	Original	X3 IP	Original	HTTPS Management	Original	X3	X3	2	Default		✓	
3	Any	Original	X3 IP	Original	HTTP Management	Original	X3	X3	3	Default		✓	
4	Any	Original	X2:V41 IP	Original	HTTP Management	Original	X1	X2:V41	4	Default		✓	
5	Any	Original	X1 IP	Original	HTTPS Management	Original	X1	X1	5	Default		✓	
6	Any	Original	X1 IP	Original	HTTP Management	Original	X1	X1	6	Default		✓	
7	Any	Original	X0 IP	Original	Ping	Original	X0	X0	7	Default		✓	
8	Any	Original	X0 IP	Original	HTTPS Management	Original	X0	X0	8	Default		✓	
9	Any	Original	X0 IP	Original	HTTP Management	Original	X0	X0	9	Default		✓	
10	All Interface IP	X1 IP	Any	Original	Any	Original	Any	X1	10	Default		✓	
11	Firewalled Subnets	X1 IP	X1 IP	Any	Any	Original	Any	Any	11	Custom		✓	
12	falancaserver Private	X1 IP	Any	Original	Any	Original	Any	X1	12	Custom		✓	
13	Any	Original	X1 IP	Any	Any	Original	Any	Any	13	Custom		✓	
14	Any	Original	X1 IP	Any	Any	Original	X3	X1	14	Custom		✓	
15	Any	Original	X1 IP	Any	Any	Original	X2:V41	X1	15	Custom		✓	
16	Any	Original	X1 IP	Any	Any	Original	X0	X1	16	Custom		✓	
17	Any	Original	Any	Original	Any	Original	Any	Any	17	Default		✓	

Total: 21 item(s)

View seçeceğinde All Types yerine Custom'ı seçelim ve sadece bizim yazdığımız kurallar ekrana getirilm. Ayrıca IPv4 ve v6 ya göre kuralları filtrelenebilir.

- Dashboard
- System
- Network
 - Interfaces
 - PortShield Groups
 - Fallover & LB
 - Zones
 - DNS
 - DNS Proxy
 - Address Objects
 - Services
 - Routing
 - NAT Policies
 - ARP
 - Neighbor Discovery
 - MAC-IP Anti-spoof
 - DHCP Server
 - IP Helper
 - Web Proxy
 - Dynamic DNS
 - Network Monitor
- 3G/4G/Modem
- Access Points
- Firewall
- Firewall Settings
- DPI-SSL
- DPI-SSH

IPv4 & IPv6

View All Types

#	Source Original	Source Translated	Destination Original	All Types	Service Original	Service Translated	Interface Inbound	Interface Outbound	Priority	Class	Comment	Enabled	Configure
1	Any	Original	X3 IP	Default	Ping	Original	X3	X3	1	Default		✓	
2	Any	Original	X3 IP	Custom	HTTPS Management	Original	X3	X3	2	Default		✓	
3	Any	Original	X3 IP	Original	HTTP Management	Original	X3	X3	3	Default		✓	
4	Any	Original	X2-V41 IP	Original	HTTP Management	Original	X2-V41	X2-V41	4	Default		✓	
5	Any	Original	X1 IP	Original	HTTPS Management	Original	X1	X1	5	Default		✓	
6	Any	Original	X1 IP	Original	HTTP Management	Original	X1	X1	6	Default		✓	
7	Any	Original	X0 IP	Original	Ping	Original	X0	X0	7	Default		✓	
8	Any	Original	X0 IP	Original	HTTPS Management	Original	X0	X0	8	Default		✓	
9	Any	Original	X0 IP	Original	HTTP Management	Original	X0	X0	9	Default		✓	
10	All Interface IP	X1 IP	Any	Original	Any	Original	Any	X1	10	Default		✓	
11	Firewalled Subnets	X1 IP	X1 IP	falancaserver Private	falancaserver Services	Original	Any	Any	11	Custom		✓	
12	falancaserver Private	X1 IP	Any	Original	falancaserver Services	Original	Any	X1	12	Custom		✓	
13	Any	Original	X1 IP	falancaserver Private	falancaserver Services	Original	Any	Any	13	Custom		✓	
14	Any	X1 IP	Any	Original	Any	Original	X3	X1	14	Custom		✓	
15	Any	X1 IP	Any	Original	Any	Original	X2-V41	X1	15	Custom		✓	
16	Any	X1 IP	Any	Original	Any	Original	X0	X1	16	Custom		✓	
17	Any	Original	Any	Original	Any	Original	Any	Any	17	Default		✓	

Total: 21 Item(s)

Status: The configuration has been updated.